

Synergi Life ESG Solution



Synergi Life is one of the world's recognized EH&S (environment, health and safety) software brands, according to Verdantix Global EH&S Survey.

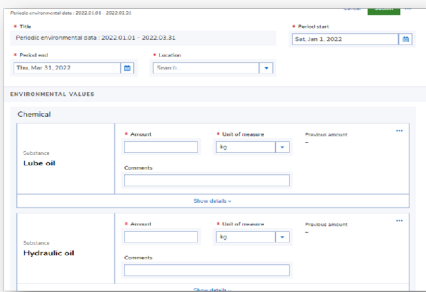
WHO we are

DNV is one of the world's largest independent assurance and risk management organizations. As the subject matter experts, we use Synergi Life for our own Environmental Social and Governance (ESG) management and put the best practice back into the software development.

WHY ESG reporting is important

There are continuous parallels being drawn between the unforeseen risks of social responsibility and climate crisis, with both impacting the global economy substantially. Therefore, ESG reporting has become a key priority for most organizations.

HOW



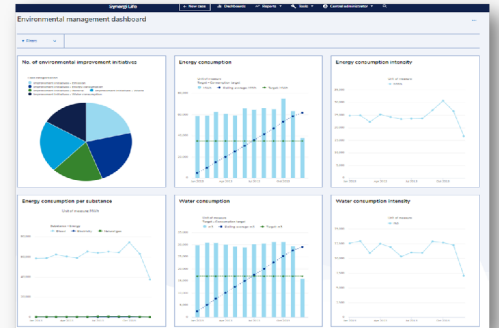
GRI-aligned ESG data capturing

Swap from spreadsheets to Synergi Life's easy-to-use forms will not only save you time but also improve the data quality. The GRI-aligned data capturing and single version of the truth would save you time and effort on more important things than compiling data.

1

Verification

Data Analysis Dashboard helps share information across organizations, better track progress on actions, analyze and verify data, improve data quality, and follow up on cases.



2

Automated reporting

Automated calculations and reporting against standards (GRI, etc) for example:

- Scope 1,2,3 of GHG emissions
- Waste, energy, material, and water consumption reports
- to name just a few

3



Generate

Time-saving templates of the professional-looking reports, with the flexibility to customize for your needs. You can export & share the report or download it to various formats for further analysis or edits.



4

Access anytime, anywhere

Access your ESG data and dashboards online or offline, whenever you needed.

5



Contact us

Christine Low
Solutions Sales Manager
Christine.low@dnv.com

