

Sesam™ 2011 DVD Release Installation Guide - August 2011



Please study this installation guide prior to starting the installation of the Sesam 2011 DVD Release.

If you run into problems that you do not find a solution for in the installation guide, please send an email to: software.support@dnv.com or contact our local support.

European time zone Tel:	+47 6757 8181 / +44 (0) 20 7716 6545
American time zone Tel:	+1 281 396 1802 / +55 21 3722 7232
Asian time zone Tel:	+82 51 611 7700 / +86 21 6219 5090 / +65 6508 3287

DNV Software

NO-1322 Hovik, Norway
Tel: +47 67 57 76 50
Email: software@dnv.com
www.dnv.com/software

1	Before installing	3
2	How to install	4
3	DNV Software License Manager	9
4	Application Version Manager	9
5	Sesam Explorer	10
	5.1 The Sesam Explorer configuration file	10
	5.2 Sesam Manager configuration	11
6	Troubleshooting	11
7	How to find further information	12

1 Before installing

- Platforms supported are:
 - Windows XP 32 Sp3 and 64 bit Sp2
 - Windows Vista 32 bit and 64 bit
 - Windows 7 32 bit and 64 bit
- Have at least 2 GB free disk space on C: for a full installation.
- The installation of all Sesam applications now assume that all programs are installed on a local machine, server installations are no longer supported.
- Perform the installation from a user with administrator privileges.
- Have a license file available for Sesam (or the address of the network license service – the DNVS License Service running on a different computer) when installing on a new computer.
- .NET 4.0 must be installed prior to starting setup of the Sesam 2011 DVD. If not installed, setup will not start. If .NET 4.0 is not installed on your computer, you must run the setup program named *dotNetFx40_Full_x86_x64.exe*, that is enclosed on the root folder of the Sesam 2011 DVD.

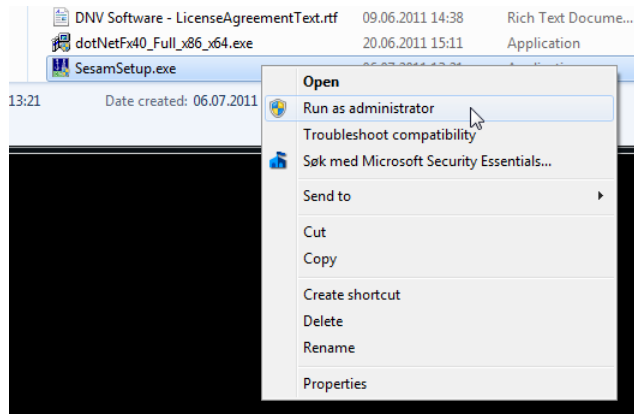
- On a machine where Sesam 2008 DVD is already installed, it will not be required to uninstall that version. The programs on this DVD installs to new locations, program version dependent folder names for each program.
- If you have an older version of the DNVS License Service installed, this service should be stopped prior to starting installation. You can find and stop this service under Administrative Tools/Services in the Windows Control Panel.
- Sesam Explorer (earlier known as Brix Explorer – Sesam configuration) V4.0-03 is included on this Sesam 2011 DVD installation. It should not be installed if you are using Windows XP and already have the V4.0-02 installed. The installation program will prohibit you from installing V4.0-03 on top of V4.0-02.
- Sesam Explorer will always be installed on its default path, if you install it from the Sesam 2011 DVD installation program. If you need to put it in another folder, you should install Sesam Explorer manually after having installed the other applications from the Sesam 2011 DVD.
If you already, by mistake, installed Sesam Explorer in the default folder, you must uninstall it, before installing it manually to another folder.
- Microsoft Word is a prerequisite for the installation program of Xtract.
- The SQL Express installation for Sesam Explorer may require your computer to reboot once during installation. Further, you may also be asked to reboot by the installation program when starting the installation.

2 How to install

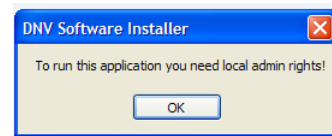
Open the Sesam 2011 DVD folder.
Right click the file “SesamSetup.exe”.

On Windows 7 select “Run as administrator”.

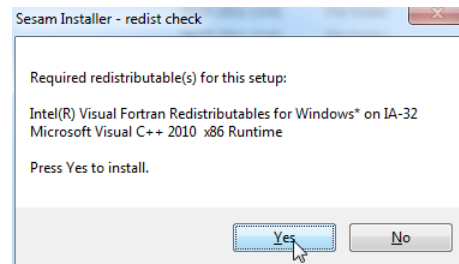
On Windows XP, just double click the file “SesamSetup.exe”.



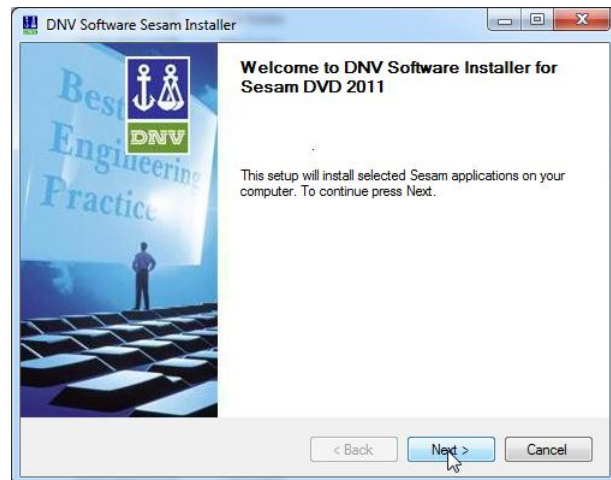
Remember that will you need administrative privileges on your computer. Otherwise an error message similar to the one shown to the right will show up, and the installation will be aborted.



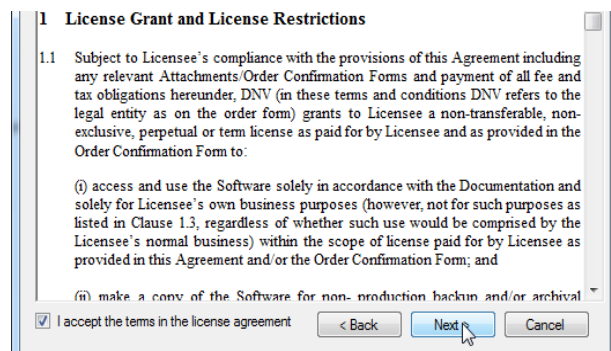
If you don't have the required Fortran and C++ redistributable DLLs (dynamic link libraries) on your computer, you will be asked to install them first. Click “Yes” on this dialog



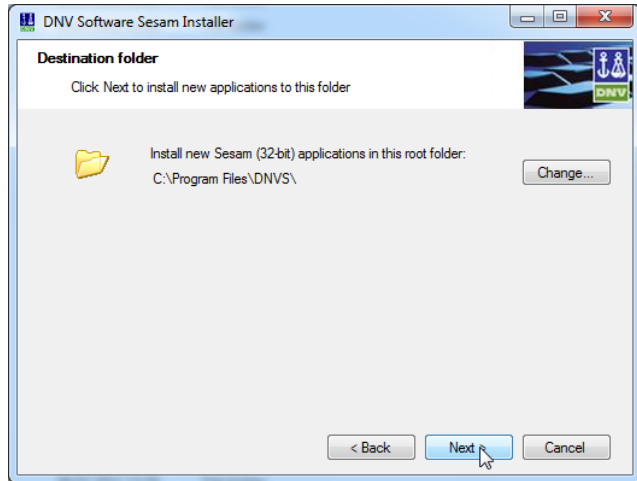
The redistributables will then first install, and after this you can continue installing the Sesam 2011 DVD.



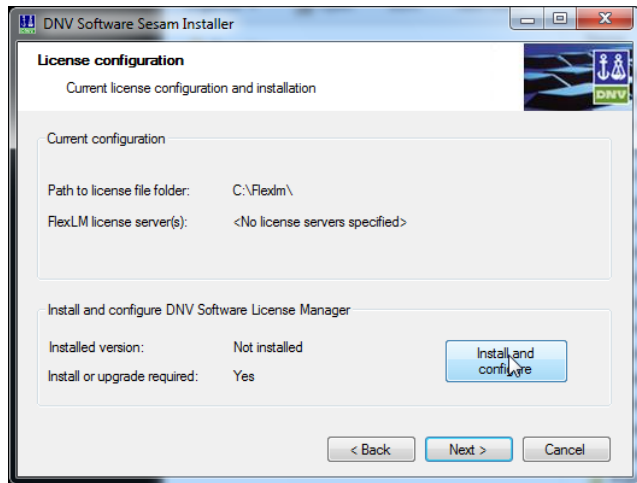
Tick the checkbox if you accept the terms in the license agreement and click the “Next” button.



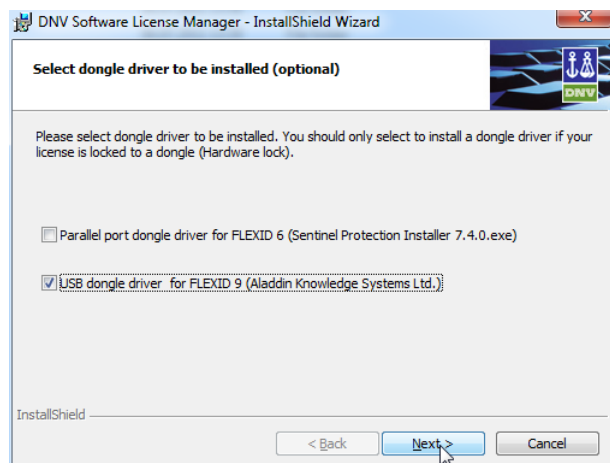
Select the destination folder where you want your Sesam applications to be installed. Note that the Brix Explorer – Sesam configuration will install to the default folder, even if you choose another folder in this dialog. See the note in the previous chapter, Important – Before installing, concerning this.



If you don't already have the DNV Software License Manager installed, you should install this.



Select the appropriate dongle driver, if you are using a dongle.

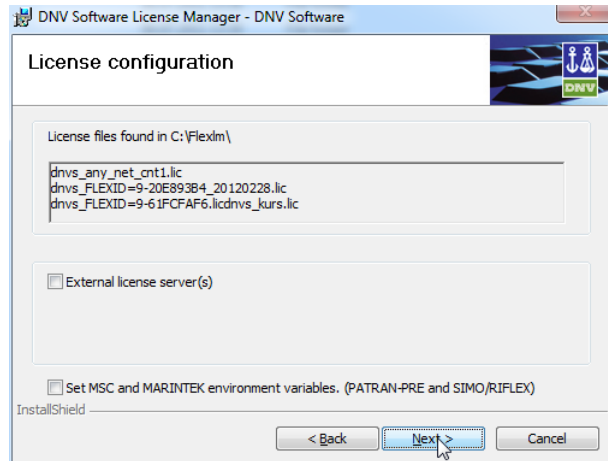


In the configuration screen for the DNV License Manager, you can:

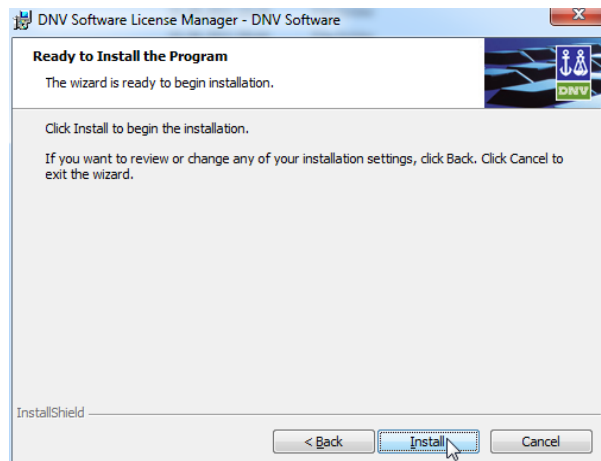
- see license files found
- select a server license
- set license environment for third party Programs

If you are using a network license you need to tick the field “External license server(s)”

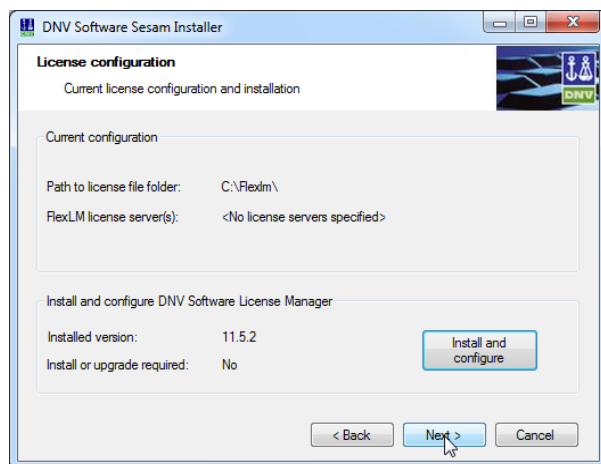
If you are using any of the programs DeepC, Patran-Pre, Simo or Riflex, you will need to tick the field “Set MSC and MARINTEK environment variables (PATRAN-PRE and SIMO/RIFLEX)”.



Click “Install” to start the installation of the Sesam 2011 DVD.



License Manager is now installed, so just click “Next”.



In this dialog you can choose which applications you want to install. Tick the checkboxes for the ones you want to install and click “Next”.

If you have chosen another destination folder than the default, you should uncheck the Sesam Explorer, and install it manually after finishing the Sesam 2011 DVD installation.

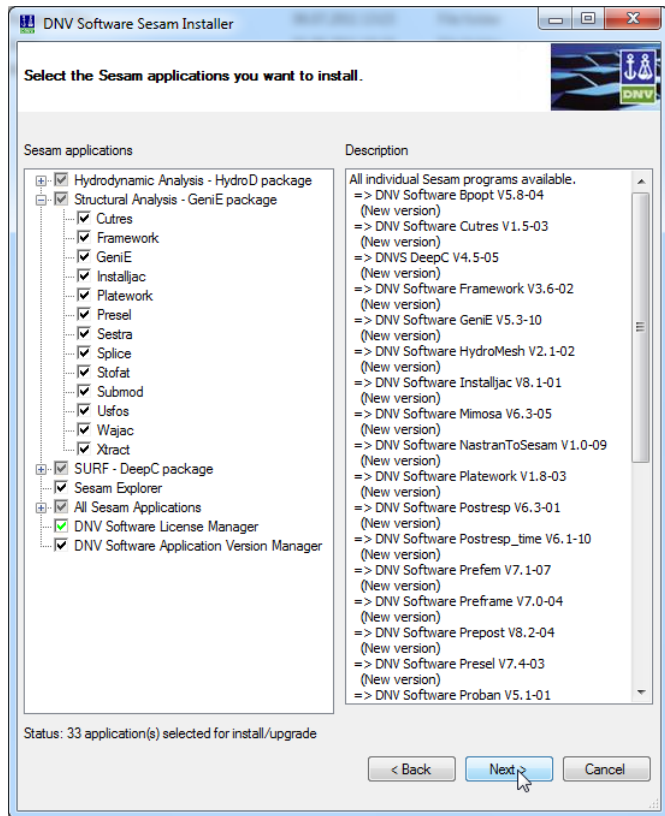
You can select program packages and individual applications under these packages.

Please note that HydroD is not included in the All Sesam Applications package, but only found in the HydroD package.

Current applications selected for installation will be preceded by a black check mark.

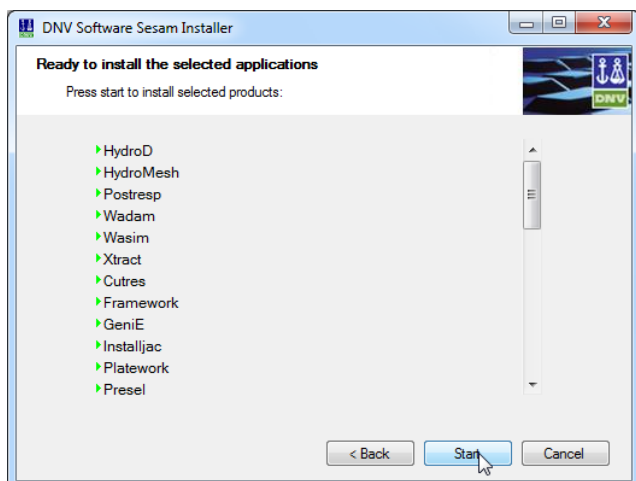
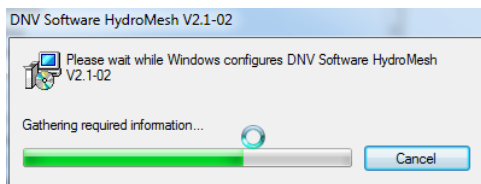
At a first time of installation, we recommend that you do NOT select Sesam Explorer, but only all other programs that you need.

When you restart SesamSetup the second time, applications already installed will be preceded by a green check mark.



Clicking “Start” installs the applications you have selected. A progress bar will appear for each application.

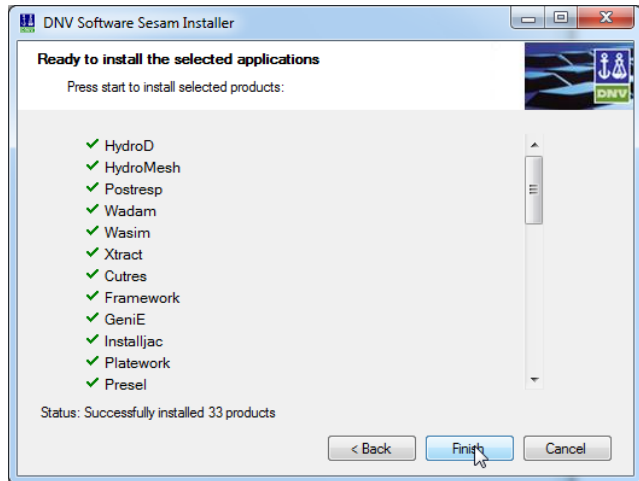
Installing your applications will take some time, depending on the number of application you have selected.



After your selected applications have been installed,

If you press “Stop”, installation of remaining applications after the current one will be skipped.

When all of your applications have been installed. Click “Finish” to exit the installer.

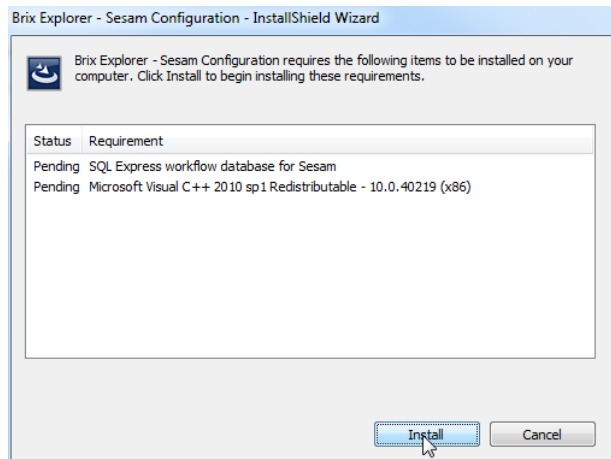


====

After your selected applications have been installed, Start the SesamSetup.exe again, and this time you select only the Sesam Explorer.

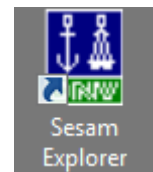
You will be asked to approve the installation of the required SQL Express workflow database and C++ 2010 redistributables. Click “Install” to do this.

During the installation of Sesam Explorer and the SQL Express database, the Setup program will display several progress windows and also some Command Windows will appear. This will take 5 to 10 minutes, but please be patient and do not interfere with this process.



When the installation is complete, the Sesam Explorer is available as an icon on your desktop and as a menu item under :

Programs | DNV Software | Sesam Explorer



3 DNV Software License Manager

An updated version of the DNV Software License Manager (11.5.2) is delivered with this DVD. This version is required in order to use dongle based license check on 64 bit platforms (Windows XP, Vista and 7).

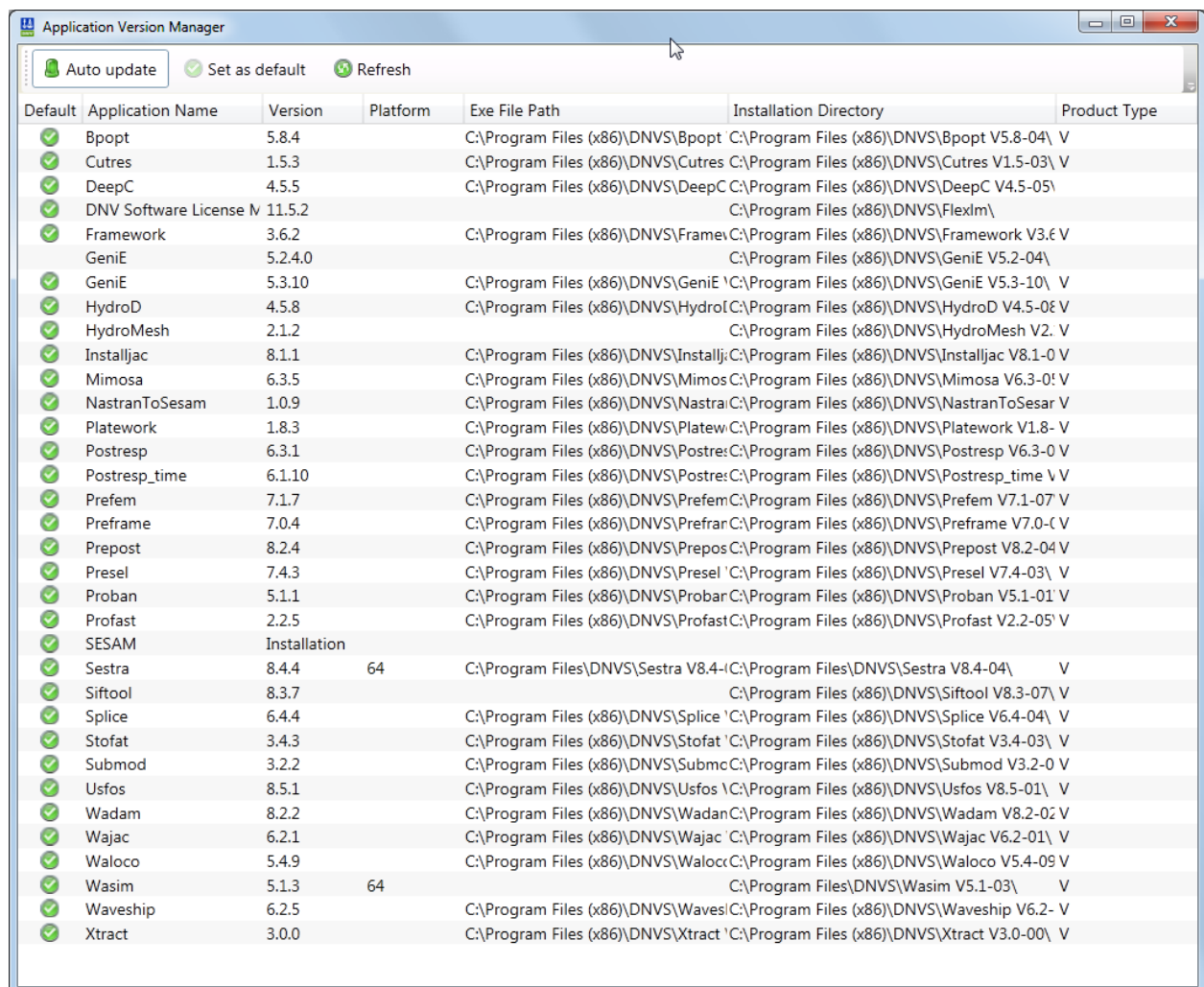
4 Application Version Manager

New with this release is that the use of the Sesam.ini file is being phased out. Managing installations is instead done using a new program, the Application Version Manager (AVM).

After having installed the Sesam 2011 DVD, you can find the Application Version Manager. in the Windows Start Menu, under DNV Software/Application Version Manager.

Here you can check that the latest program versions are set to default.

You can also set older versions to default (if you have older versions of the applications installed), but then you must disable Auto Update by clicking this button.



The new DVD releases of GeniE and HydroD uses the AVM to find the applications being started from these programs. As default, the version with the highest version number will be used. If both 32 bit and 64 bit versions of an application are installed, the 64 bit version will be preferred.

For Sesam Explorer, the list of programs will be created at the time of installing Sesam Explorer.

5 Sesam Explorer

Sesam Explorer (earlier known as BriX Explorer – Sesam Configuration) comes in two versions, one for Win XP and one for Win 7 and Win Vista. The reason for the two versions is the database technologies for the different operating systems as supported by Microsoft.

The two versions are as follows:

- Version 4.0.2 for Windows XP 32 bit
- Version 4.0.3 for Windows 7/Vista and XP 64bit

Sesam Explorer for Win XP is using the database MSDE while the Sesam Explorer for Win 7 and Win Vista is using SQL Express 2008. The functionalities for both versions are the same, but because of database incompatibilities a MSDE database cannot be opened by SQL Express 2008. Consequentially, an existing Sesam Explorer MSDE project file cannot be accessed by Sesam Explorer for Win 7 and Win Vista.

Clients who want to continue to use Win XP should thus not re-install Sesam Explorer, but continue to use the version already installed. Clients who want to migrate to Win 7 or Win Vista should install the new Sesam Explorer.

In case existing workflow data needs to be migrated from Win XP to Win7/Vista it will be necessary to export and import the workflow data (with or without project data) by using the various features as offered by Sesam Explorer. See Chapter 3.1 and 3.7 of the Sesam Explorer User Manual for more details.

Since we have replaced the Sesam.ini file with the Application Version Manager, Sesam Explorer on Win XP does not automatically find the path for the Sesam applications and you need to edit the path in Sesam Explorer. In case you are using the standard installation path (as given by the Sesam 2011 DVD) we have enclosed configuration files to be used by Sesam Explorer – these will rectify the problem. The files are found on the /Utilities folder under the root folder of the DVD, named sesam32.config for the 32bit platform and sesam64.config for the 64 bit platform. The file must be copied into '<SesamExplorerInstallationFolder>\config' and renamed to Sesam.config. This will probably require administrative privileges on your computer.

When installing the Sesam Explorer for Win 7 from the DVD installation, the program paths should be automatically set.

5.1 The Sesam Explorer configuration file

This chapter describes how to manually update the Sesam.config file for use by Sesam Explorer. Notice that it is not necessary to do this for a Windows 7/Vista installation.

Version 4.0-03 of the Sesam Explorer (Brix Explorer – Sesam Configuration) is provided for compatibility with the Win7 64-bit platform. If you have an existing installation of Sesam you should not install version 4.0-03 from the “Sesam DVD 2011”. In this case you will need to manually update the Sesam.config file. This file contains default paths of all Sesam programs.

The Sesam.config file is found in the '<install root>\SESAM\BRIXExplorer\config' folder. The part of the file that needs to be updated typically has the syntax:

```
...
<add key="Framework" value="C:\Program Files\DNVS\Sesam\bin\Framework.exe" />
<add key="Genie" value="C:\Program Files\DNVS\Genie\Program\Genie.exe" />
<add key="Gensod" value="C:\Program Files\DNVS\Sesam\bin\Gensod.exe" />
...
```

Depending on whether you are on a 32-bit or a 64-bit platform the file need to be updated typically as follows to comply with the new install pattern:

32 bit:

```
...
<add key="Framework" value="C:\Program Files\DNVS\Framework V3.6-02\bin\Framework.exe"/>
<add key="GeniE" value="C:\Program Files\DNVS\GeniE V5.3-10\Program\GenieR.exe" />
<add key="Gensod" value="C:\Program Files\DNVS\Splice V6.4-04 \bin\Gensod.exe" />
...
```

64 bit:

```
...
<add key="Framework" value="C:\Program Files (x86)\DNVS\Framework V3.6-02\bin\Framework.exe"/>
<add key="GeniE" value="C:\Program Files (x86)\DNVS\GeniE V5.3-10\Program\GenieR.exe" />
<add key="Gensod" value="C:\Program Files (x86)\DNVS\Splice V6.4-04 \bin\Gensod.exe" />
...
```

5.2 Sesam Manager configuration

Furthermore, replacing the Sesam.ini with the AVM means that it is no longer possible to use the Sesam Manager on Win 7 without special provisions. If using the Sesam Manager from the Sesam 2008 DVD release, you must edit the application paths to the individual Sesam applications to apply the versions from the Sesam 2011 DVD Release. This is done by using menu Options | Programs | Executable ... where you may set paths to individual applications. This must be done before creating/opening a project, and the settings will then applied to all new projects. Old projects must be updated one by one. Note that the old Sesam Manager is not delivered on this DVD.

6 Troubleshooting

- If you install Sesam applications after having installed Sesam Explorer – Brix configuration. Sesam Explorer is not able to automatically retrieve the path of these Sesam applications. The solution to this is to open the Windows control panel and select “repair” for Sesam explorer under Add/Remove programs.
- The following redistributables should be installed automatically when starting the installation program:
 - Visual C++ 8.0(2005) and 10.0(2010)
 - Fortran 11.1.051
 If the installation program fails to install them, they can be installed manually from the folder *Redist* on the Sesam 2011 DVD.
- Xtract installation may fail if Microsoft Word is not present on your computer. The installation program will then display: Error 1720 (A script required for this install to complete could not be run).
- Some of the program installations may fail with 2738 (Could not access VBScript run time for custom action).
This may indicate an improper installation of VBScript runtime. When installing from the Sesam 2011 DVD SesamSetup.exe, this problem should not appear.

7 How to find further information

Status lists, release notes and user documentation for the different applications can be found:

1. On the DNV Software download web page:
<https://projects.dnv.com/sesam/manuals/manuals.html>
User ID: <contact DNV software>
Password: <contact DNV software>
2. On the customer portal
<http://www.dnv.com/services/software/>
Choose *customer login* on this page. This requires a user specific password that can be provided from DNV Software support.